

Voxativ

# Absolut Guide

# Table of contents

<b><u>Page</u></b>	<b><u>Topic</u></b>
2-3	TOC/Intro
4	What's in the box?
5	Quick Start
6-14	Let's get connected
6	Overview
7	Wired connections
7	<i>Power</i>
7	<i>Speaker cables</i>
8	<i>Analog IN</i>
9	<i>Optical IN</i>
9	<i>Analog OUT</i>
10	Wireless connections
11	<i>Connecting via Bluetooth</i>
12	<i>Connecting via WiFi (ShairPlay/AirPlay® compatible)</i>
14-17	Let's play some music
14	Via WiFi (ShairPlay/AirPlay® compatible)
16	Via Bluetooth / aptX
16	Via Analog inputs
16	Switching inputs
17	Remote control
18	FAQ
19	Technical Overview
20	Troubleshooting
21	Safety Guidelines
22	Repair/Maintenance/Warranty/Disposal

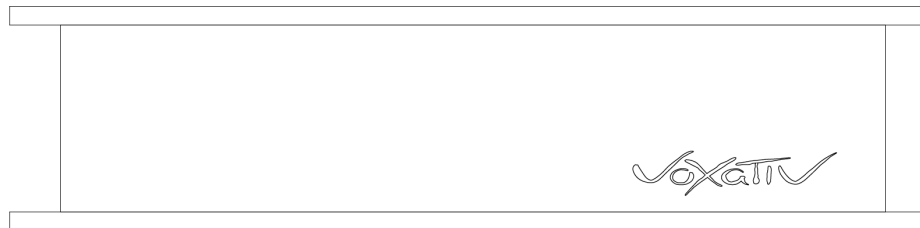
## Pure plug+play listening is just a moment away...

This guide will get you up and running quickly. A high-end audio system does not have to be complicated. For most, an Absolut System is absolutely all one needs to enjoy pure listening at home.

To get the most out of all features, please read this manual carefully. We advise you to keep this manual for future reference — or refer to the online “User Manual” that will be updated in continually as new features, advice or other information becomes available.

Das Absolut System comes in several variations depending on the loudspeaker chosen. The purpose of this guide is to familiarize you with:

### Digital audio streamer **Absolut Box**

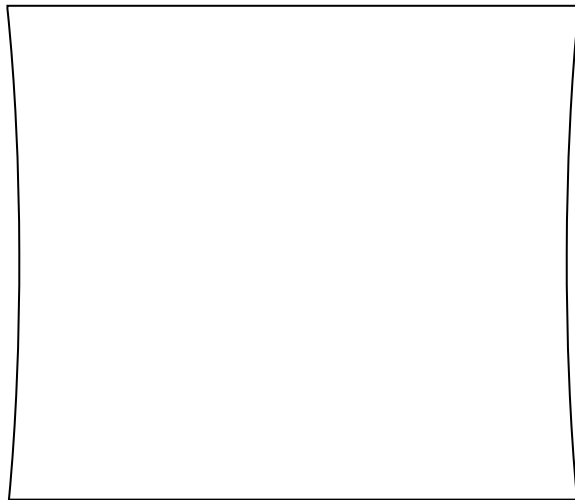


The information provided here is universal regardless of whether it has been purchased with the Hagen monitors, Zeth towers or other future models. For specifics regarding setup of the various loudspeakers, please refer to the dedicated manuals for each model (Hagen, Zeth, etc.) that has also been provided.

Over time, new features and advice on how to best use your Absolut System will be made available via <https://voxativ.berlin/absolut-systems-1>. Updated versions of this manual will be made available for download.

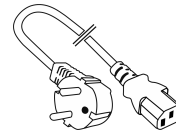
# What's in the box?

1x Digital audio streamer **Absolut Box**



Integrated Amp  
(30W Solid-state Class AB )  
192/24 DAC  
Custom DSP  
WiFi / Bluetooth / aptX  
AirPlay® compatible  
Roon compatible

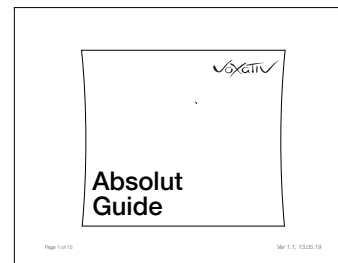
1x Power cable (varies by region)



1x IR Remote Control



1x **User Manual**



# Quick Start

The fastest path to music is via Bluetooth\* in **three steps**:

1. **Set up equipment** so that the Absolut Box is between the two speakers. Ideally, the rear of the speakers are about 1ft (30.5cm) from the wall and at least 6 feet (2m) apart from one another.
2. **Connect the cables:** AC power plug to the wall and loudspeaker cables between the components. Physically switch on the unit and after a brief pause you will hear the unit “click” on. Within 30 seconds, the Absolut Box is ready for wireless connection.
3. **Connect via Bluetooth** from your smartphone/tablet/computer, to the device named e.g. “Absolut Hagen”. **Open your favorite streaming app and play.**

Once connected, any audio from your smartphone/tablet/computer will output to the Absolut system.

**As a precaution, set the volume of your smartphone/tablet/computer to a low/moderate level before tapping play. Once audible, adjust levels to taste without fear of damaging the speakers.**

The physical remote included controls only volume up/down/mute. This remote can be used to set an overall max setting and then put away. Once set, the in-app volume controls can be used. Alternatively, set the max volume from the smartphone/tablet/computer and then adjust using the physical remote.

\* The quality of the Bluetooth connection is different between Apple & Android devices. For most Android devices (as well as the new SONY Walkman), the Bluetooth connection is superior due to their choice of implementing the apt-X codec. For highest fidelity using an Apple device, we recommend using the AirPlay® compatible WiFi connection. To connect this way, read ahead as additional steps are needed (See page 12).

# Let's get connected

## Remote

Pairing button for included remote or for IR-learning remotes

## Analog IN

RCA (white/red) audio inputs for external A/V devices such as CD/DAC, AV, Phono stage, etc.

## Digital IN

Optical (TOSLINK) audio input for external A/V digital devices such as CD/DAC, AV, Cable/Sat Box, AppleTV, etc.

## Analog OUT

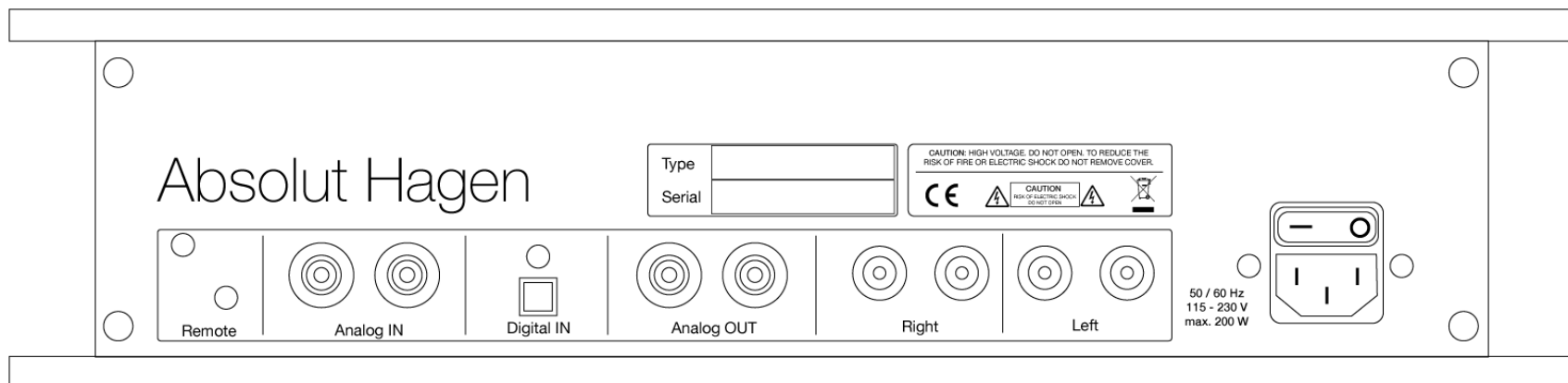
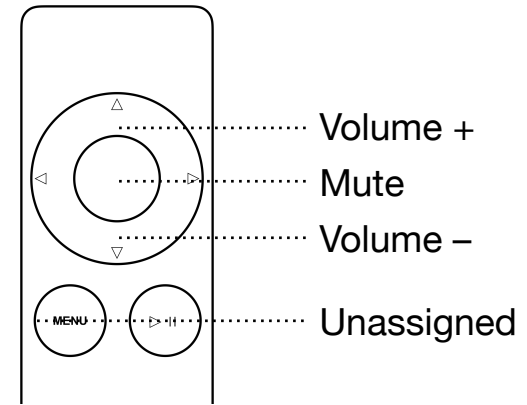
Volume-controlled output for connection to add'l subwoofers, amps, preamps in use with the assigned Voxativ loudspeakers

## Right/Left loudspeaker outputs

8 Ohm taps that connect ONLY to the assigned Voxativ loudspeakers

## AC Power Inlet / Power Switch

For external power connection to internal switching power supply that will



(Note: The illustration above depicts an **Absolute Box** pre-configured for **Hagen** loudspeakers. If pre-configured for **Zeth**, etc., the rear label would indicate **Absolute Zeth**, etc.)

# Let's get connected

## Wired Connections

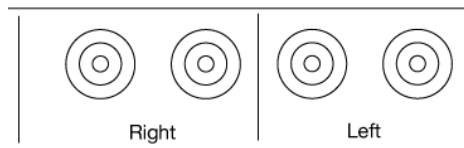
First, unpack and remove any protective film carefully not to scratch the surface. (Before wiping away dust, ensure the cloth you are using is free of any debris.) Place D.a.s. Absolut Box on a stable surface between the loudspeakers. For optimal WiFi performance, place the Absolut Box near your wireless router.

### *Connecting to mains AC power*

Connect the Absolut Box to your power outlet and switch on. For those using larger audio-grade power cabling that may obstruct access to the switch, it may be easier to flip the switch on first. The internal switching power supply will automatically convert to regional power requirements around the world.

### *Connecting loudspeaker cables*

Connect your Voxativ loudspeakers (Hagen, Zeth, etc.) using the Voxativ speaker cables that have been designed as an optimal signal conductor for your Absolut system. The conductors used in these cables are the same pure copper design as the internal cabling of the Voxativ loudspeakers - allowing for one continuous common circuit (using other cabling may subjectively alter the listening experience).



**Due to the custom DSP inside, do NOT connect loudspeakers that were not assigned to the amp from the Voxativ factory.** Pay close attention to the orientation of the cabling — left channel input to left speaker output, right channel input to right speaker output, red to red, black to black, etc. Incorrect wiring will significantly deteriorate the stereo illusion necessary for a high fidelity listening experience.

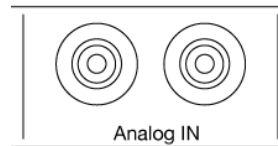
## Let's get connected (cont'd)

### Wired connections (cont'd)

In addition to wireless signal input, your Absolut Box has hardwired connections for external components such as DACs, AV Receivers, phono stages, etc. It's important to note that any signal received by the Absolut Box (wired or wireless) will be output from the speaker outputs after being digitally processed by the internal 192kHz/32bit DSP (DAC outputting at 192/24) with custom-set frequency response curve. This ensures the signal being output to your assigned Voxativ speakers is as linear as possible to provide a full-range frequency listening experience with abundant bass information (i.e., down to 45Hz w/Hagen and 40Hz w/Zeth).

### *Connecting to Analog IN (RCA)*

External analog devices with RCA outputs can be connected to Analog IN. Like loudspeaker connections, make certain that the colors of the RCA connectors coordinate with the inputs. White (sometimes black) always goes to white, whereas red goes to red, etc. Reversing these will significantly impact the fidelity of the listening experience. As mentioned above, any signal sent into the analog inputs will be processed and preserved digitally.



It is also highly recommended that any device using the Analog IN also be plugged into an AC outlet that is shared by the Absolut Box itself (whether that be at the wall or within a power block/strip). This will help guard against a potential ground loop error which presents itself as an audible low-level hum (60 Hz) through the speakers. If this is present,

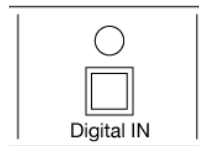


## Let's get connected (cont'd)

### Wired connections (cont'd)

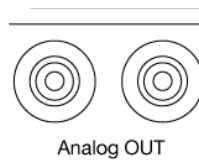
#### *Connecting to Digital IN (Optical/TOSLINK)*

Some external digital sources offer the output of their data stream via an optical connection sometimes referred to as TOSLINK. Such devices could be A/V sources such as cable boxes, TVs, computers, etc.



The benefit of any hardwired digital connection is that it is far less susceptible to wireless interference during transmission. An optical connection is also free of any electrical grounding interference given the nature of the optical signal being sent. The maximum digital input of this connection is 96kHz/24bit.

#### *Connecting to Analog OUT (RCA)*



This is a volume-controlled output allowing for output to an active subwoofer like our Z-Bass units. This output can be used also as preamp out for an external tube amp or as a source input into another preamp where the amplification stage is bypassed. In either scenario, the custom DSP is still applied, so make certain that the loudspeakers being used are the Voxativ models that came with the Absolut System.

## Let's get connected (cont'd)

### Wireless connections

**For absolute simplicity, we recommend a wireless connection.**

This Absolut system was primarily designed and optimized for wireless playback. A wireless connection is the simplest path to our pocket-friendly personal streaming devices that have access to millions of high-resolution songs via a swipe and tap.

Wireless connections are also free from electrical ground interference or ground loop/hum which can be more pronounced with high-efficiency/sensitive full-range loudspeakers like Voxativ.

Your preference of wireless connection may be influenced by the primary smartphone/tablet/computer you are using. For example, the quality of the Bluetooth connection is different between Apple & Android devices.



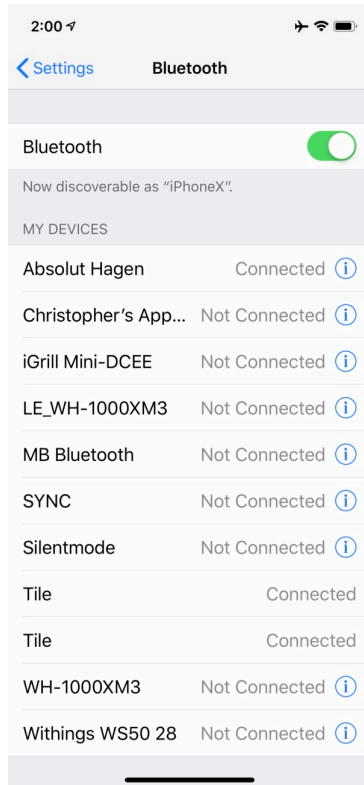
For most Android devices (as well as the new SONY Walkman and other digital audio players), the Bluetooth connection is superior due to their choice of implementing the apt-X codec that allows for a near-CD bitrate at 96/24. As of now, current production models of D.a.s. Absolut Box do not support Google Chromecast®.

For highest fidelity using an Apple device, we recommend using the WiFi connection (ShairPlay/AirPlay® compatible).

# Let's get connected (cont'd)

## Wireless connections (cont'd)

### Connecting via Bluetooth



*(The image to the left depicts the iOS environment on an iPhone)*

After being powered on, the Absolut Box will automatically begin broadcasting a Bluetooth network within 30 seconds.

### To pair your smartphone/tablet/computer...

1. Activate your personal Bluetooth connection in the settings
2. Search for and select e.g. "Absolut Hagen" ("Absolut Zeth," , etc.)
3. After pairing, any audio playing from your source device will be output to the Absolut system (including audio alerts from your device OS)
4. The devices are now paired and will automatically re-connect when both devices are within a 30ft/10m range. To pair another device, disconnect the current Bluetooth connection.

**Note:** If the Absolute Box is powered on, but has fallen into its sleep mode after a period of inactivity — reconnecting via Bluetooth will wirelessly wake it up.

## Let's get connected (cont'd)

### Wireless connections (cont'd)

#### Connecting via WiFi (ShairPlay/AirPlay® compatible) using the AirLino app

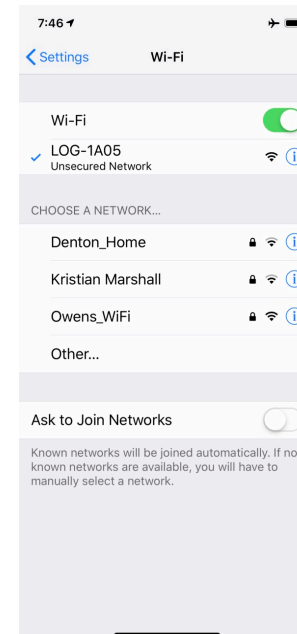
After being powered on, the Absolut Box will automatically begin broadcasting a WiFi network within 30 seconds. For the best performance, you must connect the WiFi network of the Absolut Box to your home WiFi network.

To accomplish this we recommend using the free app called “**AirLino®**” by LinTech GmbH available for download from the Apple app and Google Play stores.



Once you've downloaded **AirLino®**, follow these **7 steps** outlined over the next few pages.

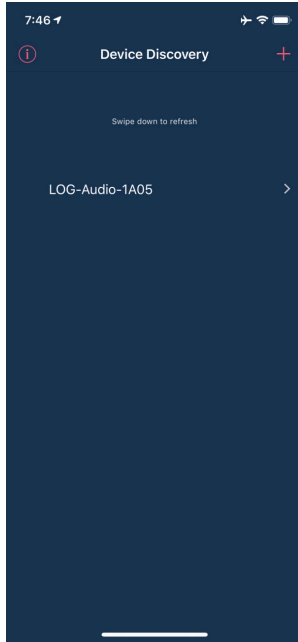
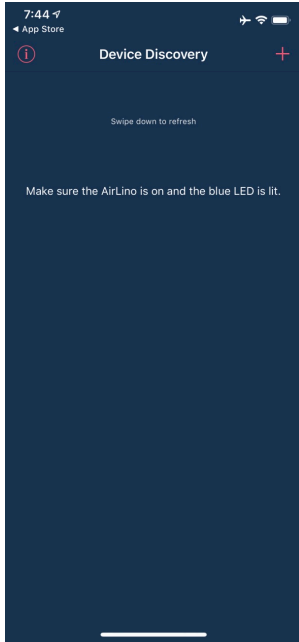
1



First, log in to the active WiFi network being transmitted by the Absolut Box with the generic name starting with “**LOG-xxxx**” typically followed by a different set of characters as seen to the left.

This initial set-up process should only have to be accomplished once (or after resetting the system).

2



Now open the AirLino® app which will see the newly connected generic “LOG-XXXX” network on the first Device Discovery page.

Once it is displayed, tap on the network name.

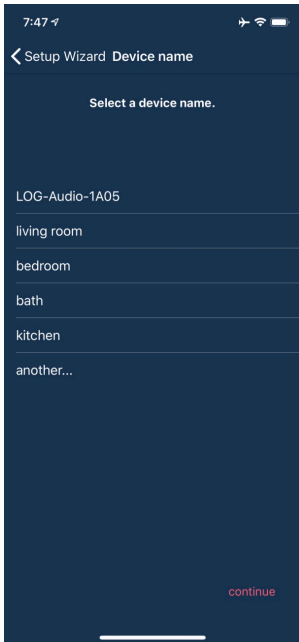
3



After tapping on the “LOG-XXXX” network name you will be presented with this screen that will walk you through the rest of the process.

To advance, tap “continue” in the lower right hand corner as seen in the photo.

4

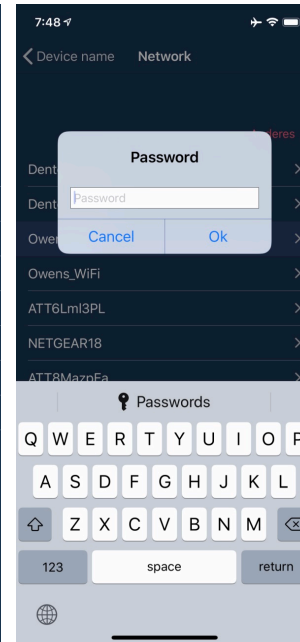
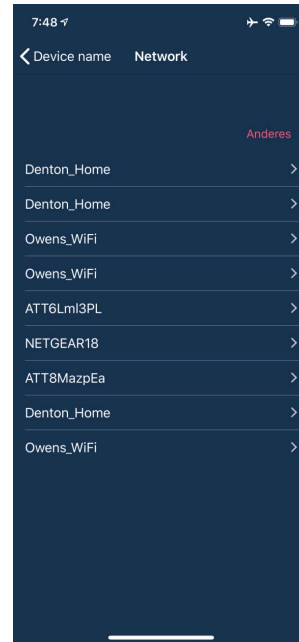


On this screen, you have the chance to change the generic network name of the Absolut Box to something more recognizable like e.g...

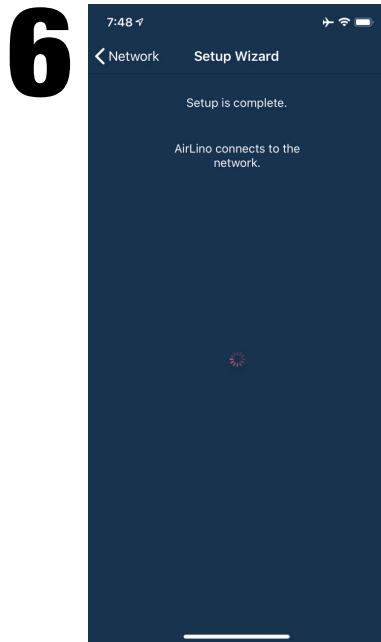
“Absolut Hagen WiFi”

This custom name can be in out after selecting the bottom of the list option “another...”

5

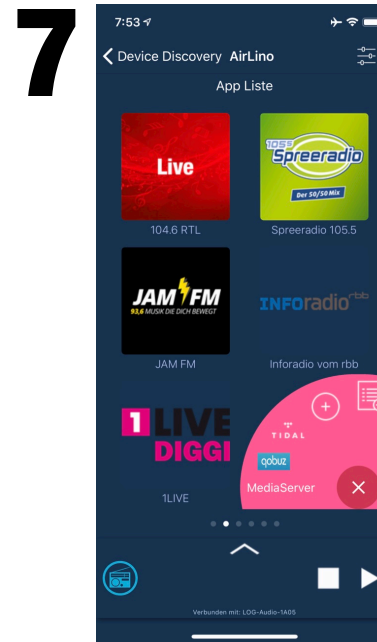
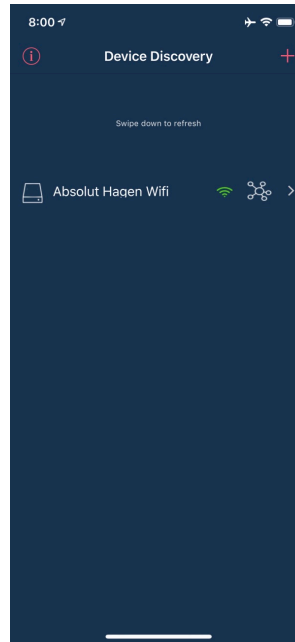


Now is the opportunity to connect the Absolut Box to your home network. Select your home WiFi SSID from the list and then your password.



After a moment, this final screen will appear to indicate setup is complete.

From this point forward, your Absolut Box will be named whatever you name it (e.g., “Absolut Hagen WiFi”) in any menu where you can choose to send audio from an AirPlay compatible music app.



The AirLino app offers an optional use of its internet radio stations as well as playlist only logins to such apps as TIDAL and Qobuz.

We recommend directly using your music apps and device streaming options to play to your Absolut system for a better user experience.

Help from AirLino is now complete. **Time to play music.**

## Let's play music

### Via WiFi (ShairPlay/AirPlay® compatible)

From this point forward usage becomes much more familiar. Simply open a music app on your smartphone/tablet/computer and then select your Absolut System network name as the source destination for the stream.

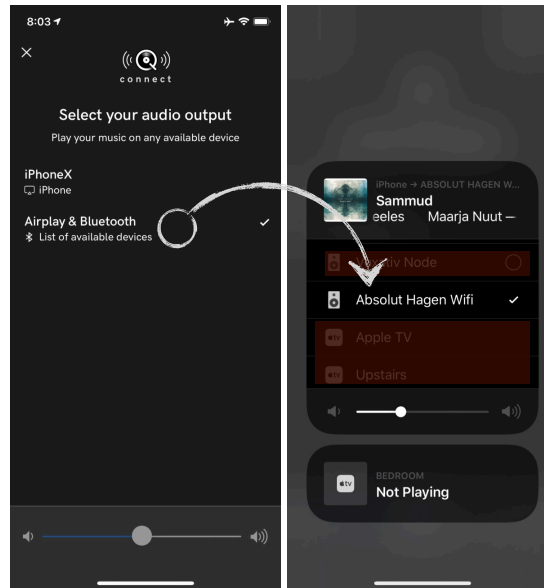
**It can be as simple as tapping on      and then selecting e.g. “Absolut Hagen WiFi”**  
**The next page shows some in-app examples for reference (via iOS)**

(Note: As of now, current production models of D.a.s. Absolut Box do not internally support Google Chromecast®)

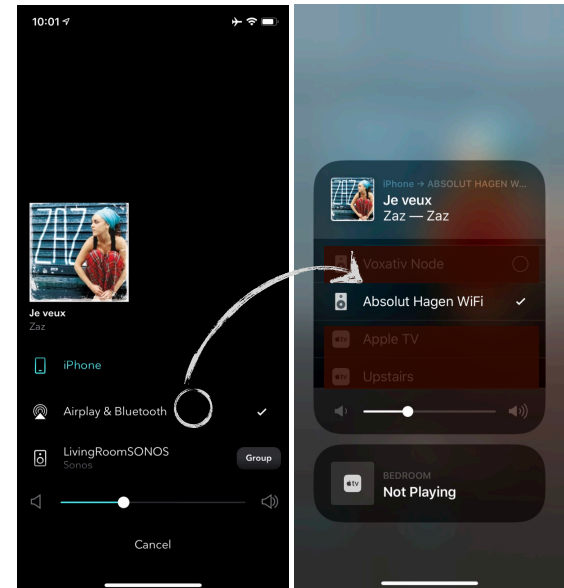
## Apple AirPlay®



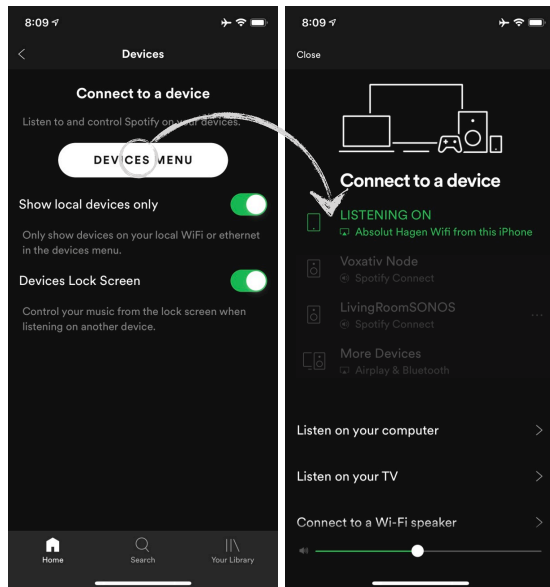
## Qobuz



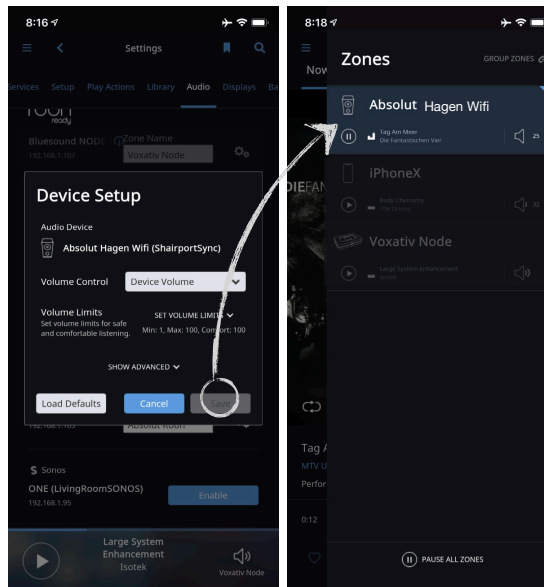
## TIDAL



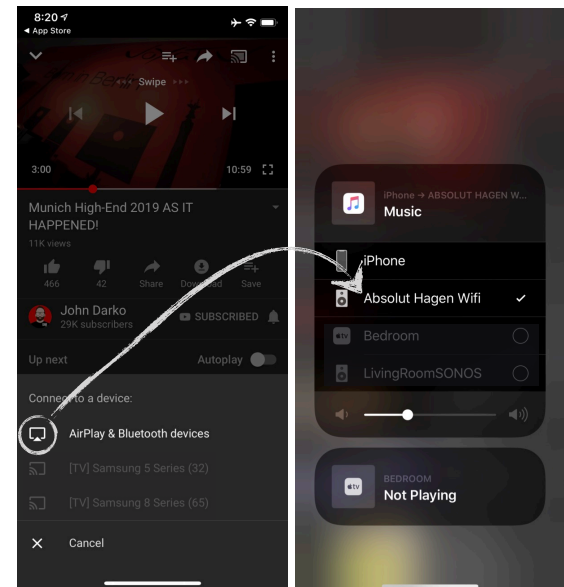
## Spotify



## Roon

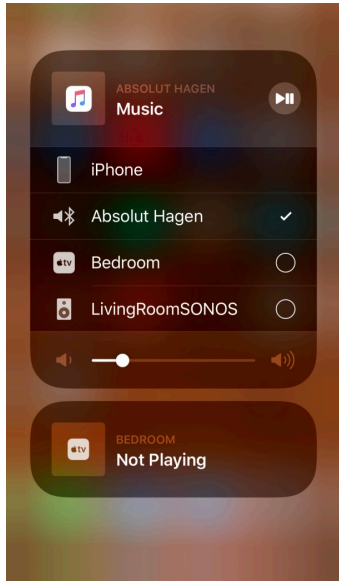


## YouTube



## Let's play music (cont'd)

### Via Bluetooth / aptX



Simply open a music app on your smartphone/tablet/computer and then select the e.g. “Absolut Hagen” connection as the source destination for the Bluetooth stream.

Range is typically within 30ft/10m.

Bluetooth aptX is currently only available on Android devices (delivering near CD quality). aptX technology must be incorporated in both transmitter and receiver to derive the “near CD quality” sound of aptX audio coding (Max 16/44 at 352kbps)

(The screen photo on the left depicts iOS from an iPhone)

### Via Analog inputs

Stop wireless playback. Start audio from the controls of the external device. Input switching is automatic.

### Switching inputs

Switching the inputs is not necessary with an Absolut Box. Both input signals (analog and digital) are played back automatically with wireless connections as priority. Be careful not to accidentally play multiple sources at the same time.

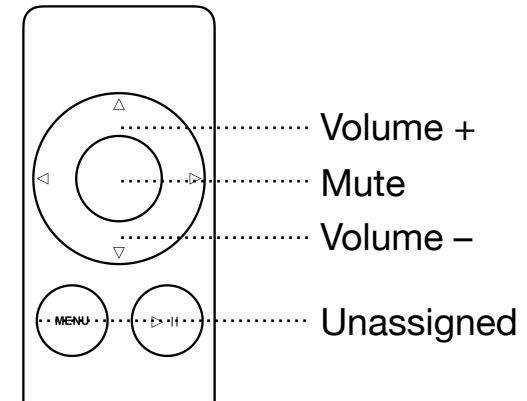


## Let's play music (cont'd)

### Remote control

In most cases, volume adjustment can be made in-app or with the hard buttons on the sides of the smartphone/tablet while streaming. The volume can also be adjusted with the supplied infrared remote control. If you want to change the volume, press the „Vol. up +“ or „Vol. down –“ key. If you hold down one of these buttons, the volume changes continuously.

Be sure to point the remote at the Absolut System as soon as you press a key. If you press the „Mute“ button you can mute the Absolut System or deactivate the mute function.



### *Pairing the remote control*

If you have several remote controls of the same type, pairing is useful to avoid conflicts. Use a pen or a straightened paper clip to press the pairing button on the back of the Absolut System.

The device is now in pairing mode for 30 seconds. Now press any key on the desired remote control (e.g., the „Mute“-key). The device is now paired with this remote control and accepts only commands from this remote control

Note: If the Absolut System does not receive any command from a remote control during the 30 seconds it is in pairing mode, the pairing is canceled and the Absolut System accepts commands from any remote control of the same type.

## FAQ

### **No buttons or screens?**

Simplicity, affordability, practicality — all Absolut objectives achieved by a “less is more” approach.

### **Where’s the subwoofer?**

We hear this all the time at audio shows. The Custom DSP applied within D.a.s. Absolut Box allows even the small speaker enclosures to resolve low-frequency information down to 45Hz.

### **Can I connect D.a.s. Absolut Box to another pair of loudspeakers?**

This is not advisable. The amp stage and DSP applied to this system were literally made for the Voxativ loudspeakers purchased with the system. A different pair of loudspeakers would have different power requirements and a frequency response that would not match the internal DSP applied at the factory.

### **Why no USB or Ethernet connections?**

This system concept is about simplicity. Plug in the power and speaker cables and then press play from your smartphone/tablet/computer. Adding additional redundant digital inputs complicates operation for the music lover who just wants to listen. For a more fussy and tweak-able system, please visit our website and peruse the last ten years of our no-holds-barred product lineup.

### **But the wireless inputs can’t do resolutions beyond CD-quality (i.e., Redbook, 16/44), etc.?**

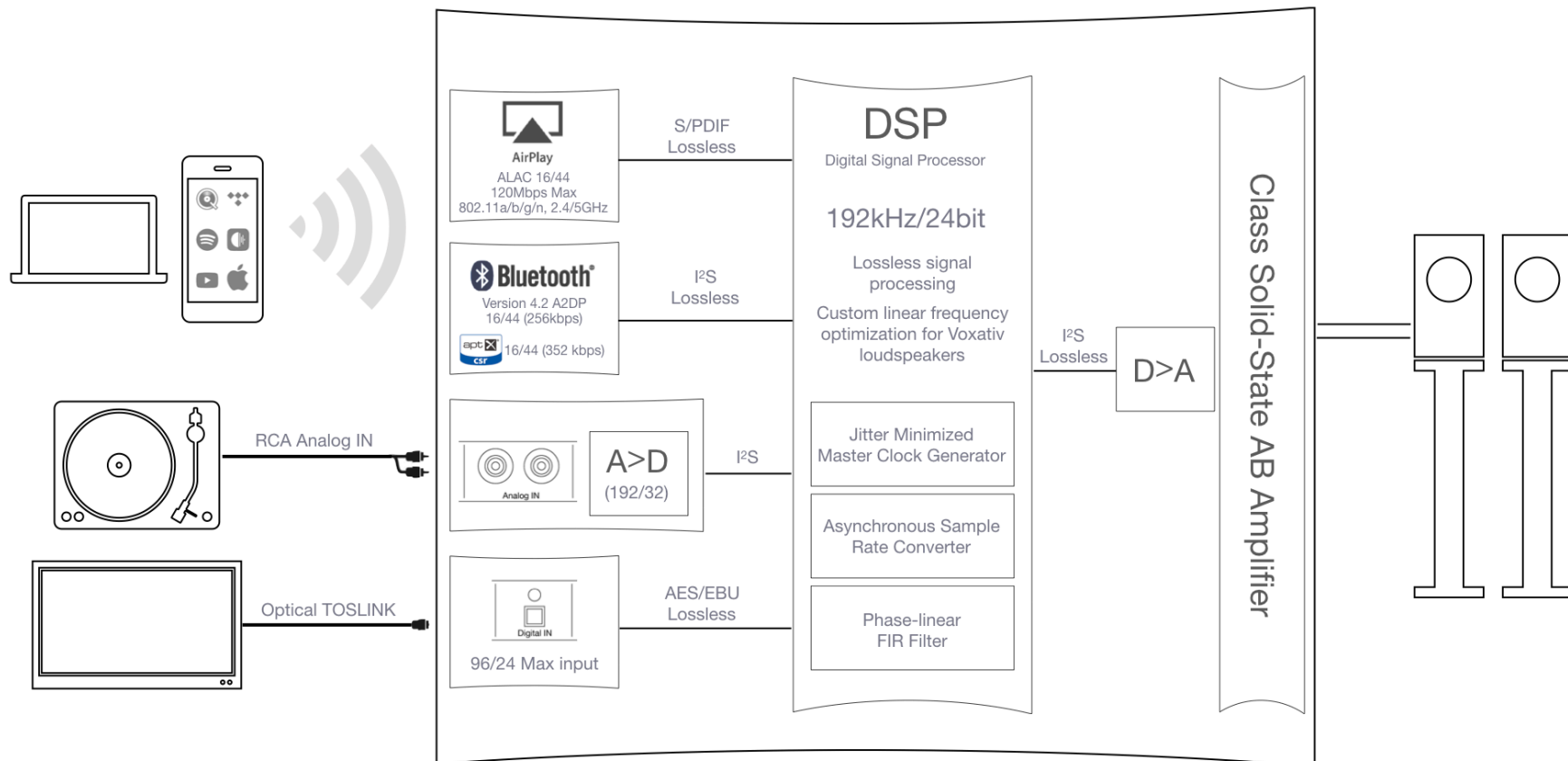
Correct. Send the Absolut Box a quality stream of whatever songs you can access. There are tens of millions of them accessible via a swipe/tap from your smartphone. Once the bits hit the DAC/DSP they are upsampled to 192/24 with a phase-linear frequency curve that perfectly matches the loudspeakers driver, enclosure resonance and horn criteria. Now listen. If at this point you are still wanting more, then perhaps this isn’t the system for you.

### **Do Tidal, Qobuz, Spotify , etc., run inside the Absolut Box?**

No. They are running on your smartphone/tablet/computer or TOSLINK connected component which is then streaming the bits to the Absolut Box where they are processed and played back thru the Voxativ loudspeakers.

# Technical Overview

<b>Dimensions</b>	330 x 50 x 295mm, 2.3kg (5lbs)
<b>Power</b>	30 W / 115 - 230 V Auto-switching PSU



# Troubleshooting

Symptom	Problem	Solution
No music	Mute-mode is active via the physical remote	Press the "Mute" or "Volume up +" button on the included remote control to deactivate the mute mode.
	No connection	There may be no connection via Bluetooth or WiFi. Check if the audio source is near the audio system. If necessary, reduce the distance between the audio source and the audio system. Simply connecting via Bluetooth typically wakes it up.
	No input signal	Check that you are actually connected to "Absolut Hagen" via Bluetooth or AirPlay®. If necessary, disconnect and reconnect.
	No power supply	Make sure the AC plug of the Absolut Box is well connected to the power outlet.
	Audio source is on mute	Make sure that you have not turned down the volume on the smartphone/tablet/computer. Slowly increase the volume.
Music too quiet	Input signal is too quiet	Decrease the volume on the smartphone/tablet/computer.
	Volume has been set too low with remote control	Increase the volume by pressing the "Volume +" button on your remote control.
Music too loud	Input signal is too loud	Decrease the volume on the smartphone/tablet/computer.
	Volume has been set too high from physical remote	Decrease the volume by pressing the "Volume -" button on your remote control.
Music is mixed up	Unintentional playback of multiple signals	Stop playing one or more unwanted sources (analog input, digital input, Bluetooth, WiFi, etc.).
Music has drop-outs	Bad Bluetooth connection between smartphone/tablet/computer and Absolut Box	Make sure that the audio source is close to the system and that there are no other interfering signals. Otherwise, reduce the distance between the audio source and the speaker, or restart your Absolut Box or Bluetooth source.
	Bad WiFi connection between smartphone/tablet/computer and Absolut Box	Reduce the distance from your audio source to your system. Make sure that there is no interference. Otherwise restart your Absolut Box and your wireless source. Contact a wireless network specialist if the problem persists.
	Bad WiFi connection between Absolut Box and home network	In many cases, the home network is not strong enough to incorporate high performance audio devices. Reduce the distance between devices and wireless router. Also a restart of the devices could resolve the problem. Contact a wireless network specialist if the problem persists.
	Bad WiFi connection between smartphone/tablet/computer and home network	Reduce the distance between the audio source and your wireless router.
<p><b>Note:</b> Wireless connections - whether Bluetooth or WiFi - are inherently more susceptible to interference than cable connections. It is therefore possible that disruptive factors (other WiFi networks, structural shielding, concrete walls, etc.) in your environment have a negative effect on the connection quality and lead to failures in the music playback - regardless of your Absolut system. In such a case, please contact a WiFi or network specialist.</p>		

## Safety Guidelines

Always observe common sense when operating any electrical devices. The guidelines below should always be followed when operating an Absolut system. Non-compliance with any of the guidelines will void the warranty — and worse, may cause harm to the user.

*Do not expose any of the components to rain or excess moisture. Make certain that the system is not sited near the use of liquids (bathtub, etc.).*

*Do not the system components near any sources of excessive heat (candles, radiators, vents, fireplaces, etc.).*

*Any electronics connected to the house mains during an electrical/thunderstorm may be damaged if the home is struck by lightning or there is a sudden surge in power.*

*Do not place heavy objects on top of the Absolut Box for fear of damage to the chassis.*

*Loudspeakers should always be placed on well-balanced stands, furniture and floors to prevent accidental falls.*

# Repair/Maintenance/Warranty/Disposal

## Repair

The Absolut System must not be unscrewed or disassembled. Unauthorized opening of the housing is a risk of electrical shock. All necessary repairs are to be carried out exclusively by a service partner or manufacturer, otherwise the guarantee and warranty claim expires. **Contact your dealer first, or come to us directly at [contact@voxativ.com](mailto:contact@voxativ.com) / +49 (0)30 2100 5662**

## Maintenance

The Absolut System is maintenance-free. Clean the surface only with a soft dry to slightly moist cloth or a feather duster. Do not use scouring powder, alcohol, gasoline, polish, wax or other similar liquids. Do not set up the Absolut System in a humid environment. Frequent temperature changes, humidity and excessive sunlight will damage the integrated electronics and may alter its appearance. If the Absolut System is destroyed by improper use, **contact your dealer first, or come to us directly at [contact@voxativ.com](mailto:contact@voxativ.com) / +49 (0)30 2100 5662**

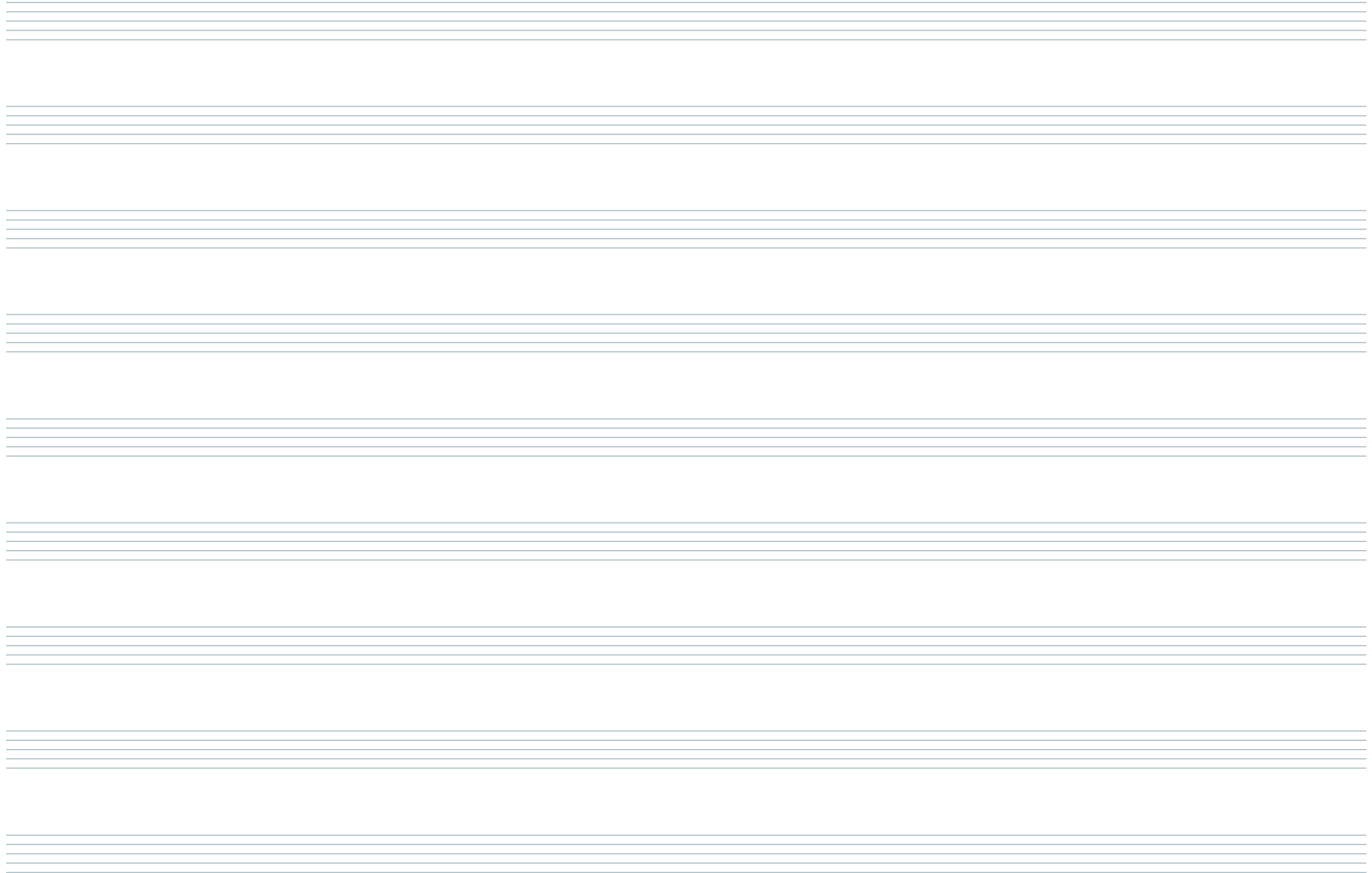
## Warranty

The warranty for this product complies with the legal requirements at the time of purchase. In addition, Voxativ offers a warranty of 2 years from the date of purchase. Changes to the device will void the warranty and the manufacturer's warranty.

## Disposal

Never dispose of the Absolut System with normal household waste. It is strongly recommended to take the product to an official waste collection point. Be aware of local regulations for separate collection of electrical and electronic equipment and follow it diligently. Proper disposal of old products helps to prevent negative environmental and health effects.

## User/Dealer Notes *(or perhaps a song?)*



The page contains ten sets of blank musical staves, each consisting of five horizontal lines. These staves are arranged vertically down the page, providing space for handwritten notes or musical notation.

voxativ.berlin  
contact@voxativ.com  
facebook.com/Voxativ  
instagram.com/Voxativ

Voxativ



VOXATIV GMBH // RINGBAHNSTRASSE 16-20 // 12099 BERLIN, GERMANY // +49 (0)30 - 2100 5662